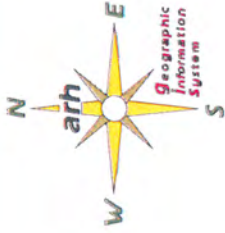




Civil Solutions  
a division of arh



# Municipal Stormwater Management Plan

## Figure No. 10

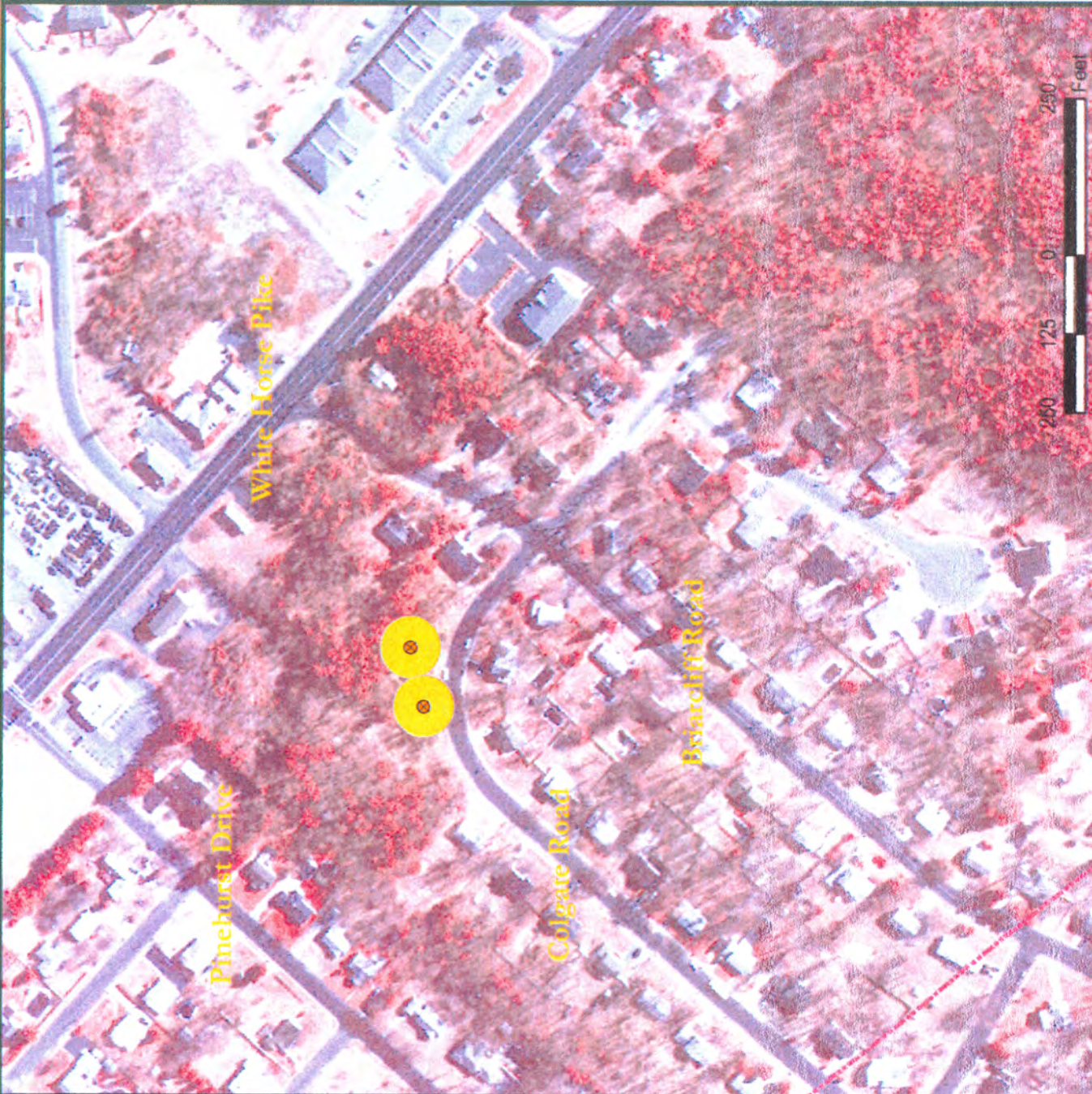
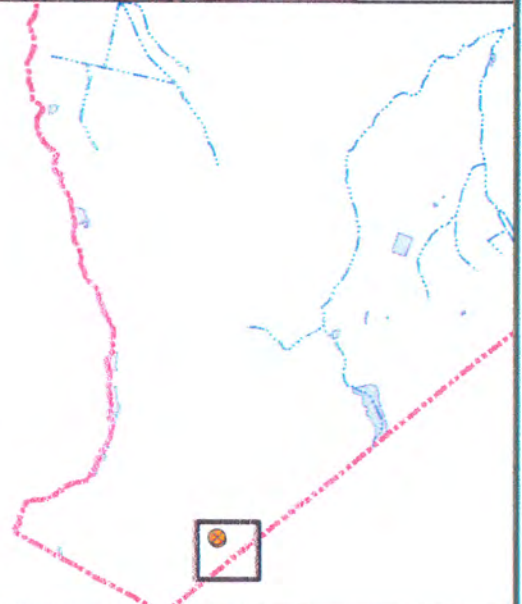
### WELLHEAD PROTECTION AREAS

#### Legend

- Municipal Boundary
  - Waterford Streams (as mapped by NJDEP)
  - Waterford Lakes (as mapped by NJDEP)
  - Public Community Water Supply Wells (as mapped by NJGS)
- Wellhead Protection Areas (as mapped by NJGS)

#### TIER

- Tier 1 (2 years)
- Tier 2 (5 years)
- Tier 3 (12 years)



County - Camden  
 Township - Waterford  
 Clementon, NJ Quadrangle #116  
 Medford Lakes, NJ Quadrangle #117  
 Hammonton, NJ Quadrangle #130

Dated: 5/26/04  
 Drawn by: SEB

Note:  
 This map was developed using New Jersey Department of Environmental Protection Geographic Information System digital data, but this secondary product has not been verified by NJDEP and is not state-authorized.

ARH Project # 77-01009

V:\7701009\Stormwater\GIS\APPR\B3\ar\_Maps\wellhead.mxd





Civil Solutions  
a division of arh



# Municipal Stormwater Management Plan

Figure No. 11

## GROUNDWATER RECHARGE AREAS

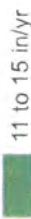
### Legend

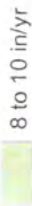
 Municipal Boundary

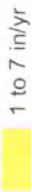
Waterford Groundwater Recharge Areas  
(as mapped by NJGS)

State Ranking

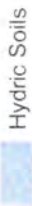
 16 to 12 in/yr

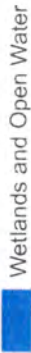
 11 to 15 in/yr

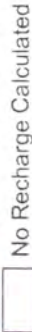
 8 to 10 in/yr

 1 to 7 in/yr

 0 in/yr

 Hydric Soils

 Wetlands and Open Water

 No Recharge Calculated

8,000 4,000 0 8,000

 Feet



County - Camden Dated: 5/26/04

Township - Waterford Drawn by: SEB

Clementon, NJ Quadrangle #116

Medford Lakes, NJ Quadrangle #117

Hammonton, NJ Quadrangle #130

Note:

This map was developed using New Jersey Department of Environmental Protection Geographic Information System digital data, but this secondary product has not been verified by NJDEP and is not state-authorized.

ARH Project # 77-01009